



3280 Electricity Drive

Windsor

Ontario

N9W5J1

CANADA

+1-877-DELCAM1

Small Heath Business Park

Small Heath

Birmingham

B10 0HJ

UK

+44-121-768-5544

marketing@delcam.com

www.delcam-dental.com

275 E. South Temple

Suite 305

Salt Lake City

Utah 84111

USA

+1-877-DELCAM1



Creativity without Compromise

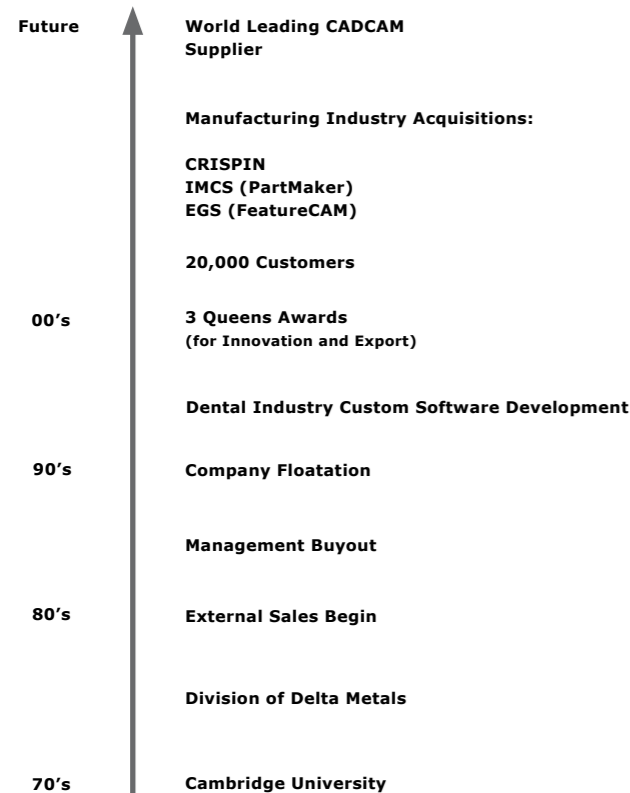
Welcome to Delcam



Delcam's Headquarters, Birmingham, UK

Delcam is one of the world's leading suppliers of advanced CAD/CAM software solutions for product development in manufacturing industry.

The company has grown steadily since being founded in 1977 after initial development work at Cambridge University, UK. It is now the largest developer of product design and manufacturing software in the UK with local subsidiaries in North America, Europe and Asia. Delcam's software is used by more than 30,000 organisations in over 80 countries, and a growing number of dental laboratories and equipment suppliers across the world.



What is the Delcam Dental Solution?

The Delcam Dental Solution is a CAD/CAM product range which provides you with a unique and complete 'open' 3D software solution, comprising the following two modules :-

DentCAD : a versatile 3D dental design module (CAD).

DentMILL : a powerful 3-, 4- and 5-axis machining program (CAM).

The Delcam Dental CAD/CAM Solution allows you to design and manufacture high quality dental restorations in 3D, faster, more easily and more accurately than can be achieved with manual techniques.

Unique software tools guide you through the entire process from the initial design to the finished restoration. No prior CAD/CAM experience is required, yet within hours you could already be saving time and money, whilst improving quality.



The Delcam Dental CAD/CAM Solution is both open and flexible, and provides you with several purchasing options :-

If you currently use no digital methods, you can buy the complete solution.

If you already have restorations machined by an external bureau, DentCAD can be purchased with an optional scanner to automate and improve your existing design process.

If you already own a scanner, a CAD system and CNC machine but would like to upgrade your CAM software to increase productivity, accuracy and flexibility, DentMILL can be purchased stand-alone.

Unlock your True Potential

Unlike many dental CAD/CAM systems, the Delcam solution is a completely 'open' system. Using industry standard formats enables easy model sharing and connectivity with other software as well as hardware devices such as scanners and CNC machines.

Key advantages of the Delcam 'open' system include:-

Freedom to work with preferred suppliers

Flexibility to work with all material types including Zirconia, Titanium and Alloys

Reduction in material costs

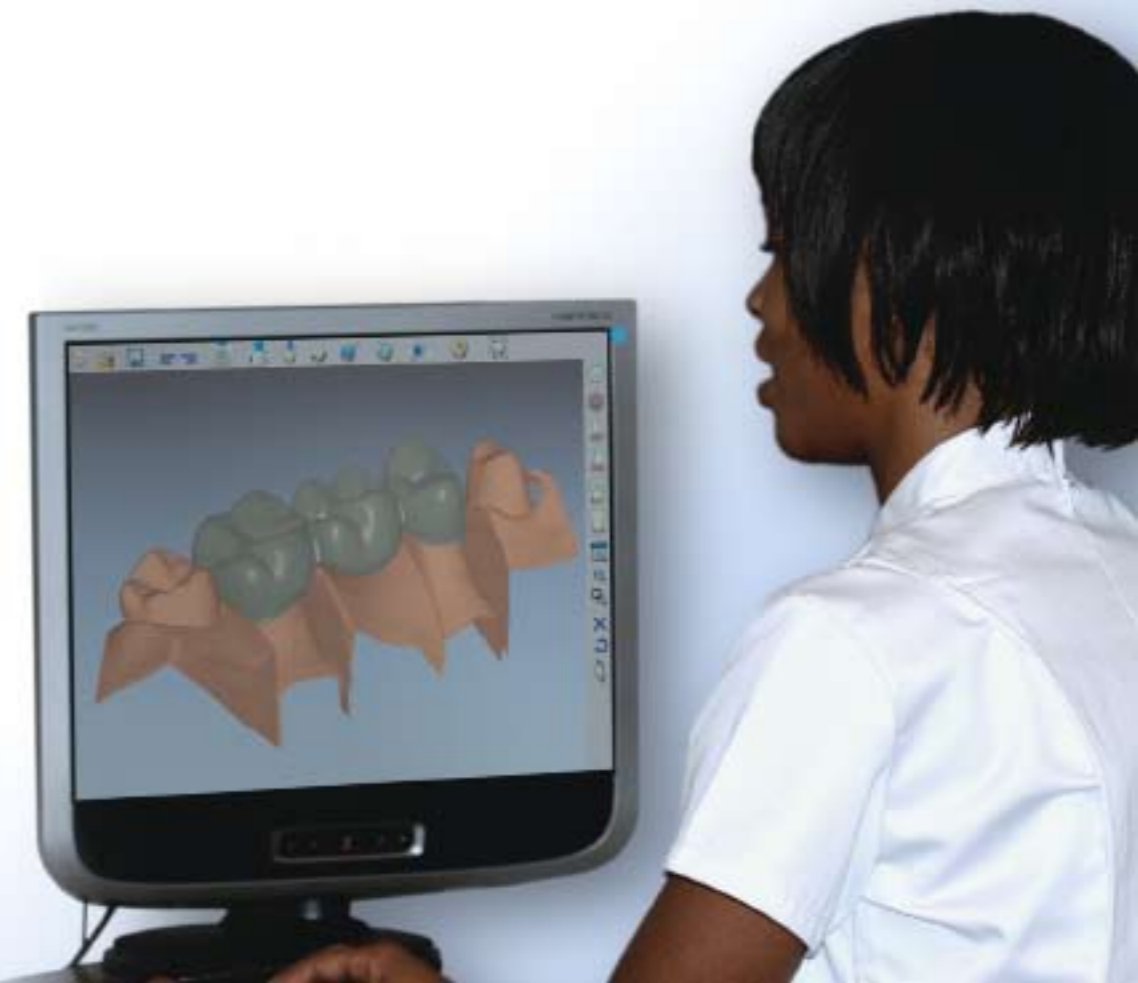
Access to a wider range of customers

The Delcam file format is extremely versatile as it is not encrypted. Industry standard formats such as STL and IGES can be used to export and import data from a wider range of sources.

What can the Delcam Dental Solution do for you?

Design and manufacturing methods that reduce costs whilst improving quality and productivity are the key to a successful dental business.

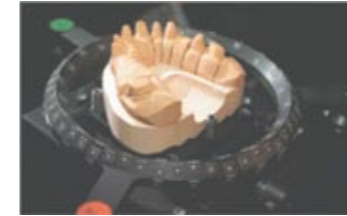
Delcam's sophisticated design and manufacturing techniques help you create high precision dental restorations in a matter of hours.



Your Open Dental CAD System

Whether you already use a 3D dental CAD program or are looking to migrate from the manual process of creating dental restorations into a 3D CAD design environment, use DentCAD to model and construct with ease.

Use DentCAD's intuitive user interface to design high quality finish dental restorations, including simple and anatomical copings, crowns and bridge frameworks, in minutes.



Intuitive

Once the scan process is complete, either using Delcam's scanning solution or your own preferred solution, follow the wizard to import scan data into DentCAD.



Easy to use

A step-by-step wizard guides the user through the design process. Powerful, user-friendly visualisation tools that include sectioning, shading and transparency options allow for easier visualisation and inspection of the 3D model.



Flexible

Associative modelling allows the user to change design parameters such as the margin line and cement thickness at any stage. The 3D model will automatically update to reflect the changes.



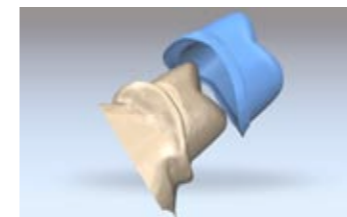
Interactive

Virtual wax knife tools add and subtract material while editing tools grab and interactively re-shape the model, fast and effectively.



Fast

The ease-of-use of DentCAD combined with the very fast modelling creation tools reduces the learning curve and significantly speeds up the design process. Designs can be finished within minutes of importing the scanned data.



Accurate

Analysis tools can be used to verify the quality of the restoration before manufacture. Accurate matching of the coping and bridge frameworks to the scanned model ensures a perfect finish for the patient.

Your Open Dental CAM System

DentMILL is a 3-, 4- and 5-axis CAM milling program to help you manufacture simple and anatomical copings and bridge frameworks including full crowns and abutments.

DentMILL's completely 'open' CAM system is based on Delcam's world leading machining program, PowerMILL, which is based on more than 30 years development of fast, accurate, time-saving machining strategies.

DentMILL's simple, highly automated CAM tools make it the most powerful dental CAM package on the market. Its ease-of-use means no prior CAM experience is necessary.

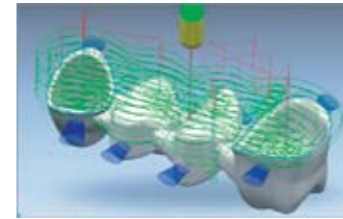


Image courtesy of Hermle



Fast, efficient and flexible machining

DentMILL's 3-axis machining module offers fast, efficient cutting strategies for most dental applications. The optional 4- and 5-axis module gives the added flexibility needed to cut undercut regions and other more complex shapes.



Fully automatic toolpath generation

No prior CAM experience is required as the user-friendly interface guides you through each step while DentMILL automatically completes the machining process. Efficient machining strategies are chosen by DentMILL to produce highly optimized part-finish and reduced cutting times.



Complete stock materials library

A library of standard stock materials is included and any custom size can be easily added. The material shrinkage value can be defined for any stock, and any material types can be machined using DentMILL, including Titanium, Zirconia and Alloy.



Automatic nesting & set-up sheets

Automatic nesting positions multiple parts in the best locations to optimize material usage. Process information sheets are created automatically to allow easy identification of specific restorations after machining. These sheets include stock material, item numbers and part shading.



Margin line priority

DentMILL recognizes the margin line as the most critical part of the model and applies unique cutting strategies in this area to ensure high accuracy, therefore minimizing hand finishing.

Need your own Customized Solution?



Custom Software Group

Delcam's Custom Software Group has been set up to undertake customization and automation projects for companies and organisations that require a tailor-made solution to match their needs. Custom solutions from Delcam are all developed using the architecture from Delcam's Power Solution range of CAD/CAM products. The use of these tried and tested components enables Delcam to deliver high quality solutions, in the minimum time frame, enabling customers to minimize their long-term dental operational costs.

The primary focus of the group is to work closely with clients to automate repetitive processes and specific functionality in order to reduce time and costs throughout the customer's design and manufacturing process.

Standard CAD/CAM systems are designed to provide the user with a great deal of flexibility enabling them to design and manufacture a wide variety of products. Some processes may not require this flexibility, and automating the process would reduce the time and cost of production. Automation can also enable the software to be used by occasional users or even without human intervention rather than by dedicated CAD/CAM operators. This leads to increased quality and consistency.

Services

Due to our significant knowledge and experience in developing large software products that provide solutions to complex problems in the CAD/CAM sector, Delcam is ideally placed to develop bespoke software projects in the dental area.

Benefits of choosing the Delcam custom solutions include:-

More than 30 years of CAD/CAM knowledge and experience

Our experience of managing large complex software projects

Our ability to build on our existing standard software products thanks to the existing Power Solution software architecture

Our minimum risk and rapid time-to-market approach

Our previous bespoke development project experience